

# AquaBanas<sup>®</sup>

**Redefining Water Entertainment**

**DRAKE Marine**  
International Ltd



## Who are we?

Based out of Orlando, Florida, AquaBananas was formed to offer an exciting new way to enjoy the water from yachts, resorts, hotels, restaurants, bars, sand bars, and many other water front venues worldwide.

Designed and built by a team of inflatable professionals with over 100 years combined experience of building the worlds most well known inflatable brands, you can be assured that our quality and service after the sale will be exceptional.

**Beverages on the water!**

**Lightweight and easy to handle!**

**Lunch on the water!**



**Redefining Water Entertainment.**

## What are AquaBananas?

AquaBananas are interconnectable life style oriented inflatable decks that provide a new way for people of all ages to relax on the water. Connect multiple decks together to form Bana Cities that are only limited by your imagination. Quick Step entries offer easy access, and ballast bags keep them stable.

Optional tents provide shade as well as a place to mount the optional JBL Extreme II speaker and light. There's even a battery powered fan to keep the air moving on stagnant days, and side walls that can provide added shade and privacy.

AquaBananas have thought about everything!





***Bana Cities Are Limited  
Only By Your Imagination!***

## Create Bana Cities!

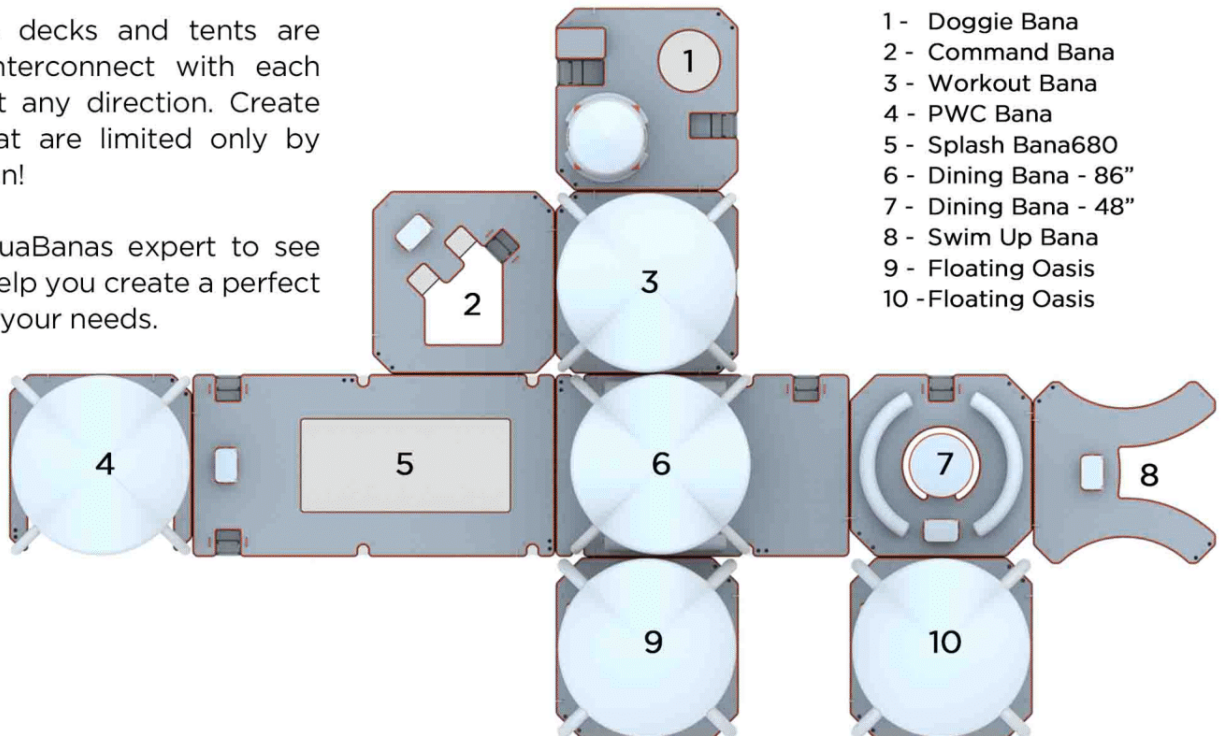
All AquaBananas decks and tents are designed to interconnect with each other in almost any direction. Create Bana Cities that are limited only by your imagination!

Contact an AquaBananas expert to see how they can help you create a perfect Bana City to fit your needs.

### Capacity:

People - 34  
Dogs - 2-3

*1400 Square Feet on the water!*



- 1 - Doggie Bana
- 2 - Command Bana
- 3 - Workout Bana
- 4 - PWC Bana
- 5 - Splash Bana680
- 6 - Dining Bana - 86"
- 7 - Dining Bana - 48"
- 8 - Swim Up Bana
- 9 - Floating Oasis
- 10 - Floating Oasis

### Enter the Bana World!

Let an AquaBananas expert take you into the Bana World program to help you build your ultimate Bana City. Whether it's on the beach or on the water, they can help you visualize exactly what you are looking for. Bana World is a 3D software program that let's you personally design your Bana City.

726 Square Feet of fun on the water!



Swing Bana  
Dining Bana  
Splash 340 Bana  
Swim Up Bana  
PWC Bana

320 Square Feet of fun on the water!



Dining Bana  
Splash 340 Bana



Swim Up Bar Bana  
Command Bana  
Spa Bana  
Workout Bana  
48" Dining Bana  
Swing Bana

770 Square Feet of fun on the water!

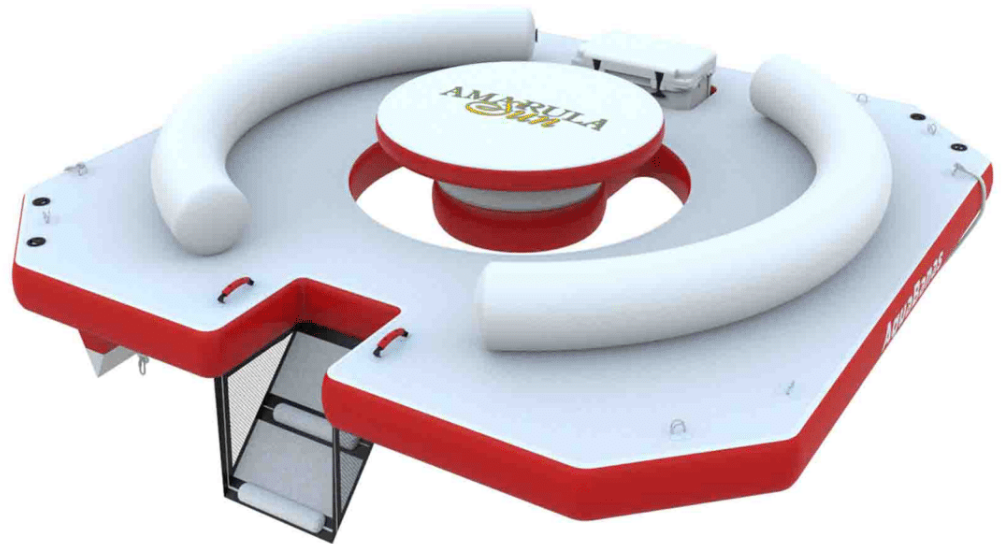
All AquaBanas products can be customized for your application.

## Add your Logo.

All AquaBanas can be built with your specific logo or brand printed in either high quality screen printing, or digital printing. Go ahead, Dream Big - AquaBanas can do it!

Talk to one of the staff experts at AquaBanas about how you can customize your decks to give you the exact the look and feel wanted.

All artwork requires vector files of .ai or .eps.



## Do you need a Custom Shape?

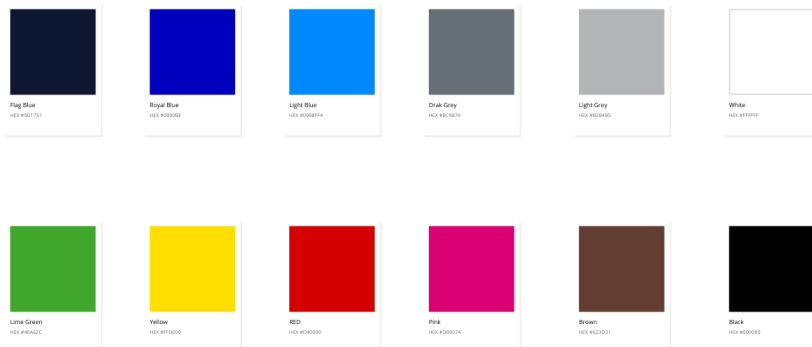
AquaBanas excels at Custom Shapes and fabrication of custom inflatables. Their management team has successfully built well over 1,000 custom inflatables of all types. They can work with you to professionally design what you need.

Contact AquaBanas for details.

## Pick your colors!

AquaBanas are available in a selection of standard colors as shown to the right. They can also match pantone color for corporate clients. Minimum order quantities will apply to all pantone color matches.

Contact AquaBanas for details.



*Resorts  
Yachts  
Beaches  
Water Parks  
Rental Operations  
Water Front Venues  
Corporate Sponsors  
and More!*

## DECK FEATURES



**QUICK STEP**



**BUILT IN COOLER WELL**



**NETTED FOOT WELL**



**NON SLIP SURFACE**



**BALLAST BAGS**



**DURABLE ANCHOR  
RINGS**

## OPTIONAL ACCESSORIES



**JBL EXTREME II  
SPEAKER**



**BOLLEKE  
RECHARGABLE LIGHT**



**YETI TUNDRA  
45 COOLER**



**SAND D SAND  
ANCHOR**



**RECHARGEABLE  
VARIABLE SPEED FAN**



**BANA CITIES!**



### 86" Dining Bana

The picnic style Dining Bana with an 86" table and a sunbathing area provides a relaxing area for lunch, beverages, and just an overall fun day on the water. The Quick Step makes access easy, and there is plenty of deck space for sunbathing.

Features:

Can accommodate up to 14 people.

Quick Step to get on the inflatable.

Layout space for 2-3 sun bathers.

Recessed space for Yeti Tundra 45 cooler.

Ballast bags for stability.

Netted footwells.

Anchor mounting ring underside.

Table will not tip over!

Connectable to form Bana Cities.



All AquaBanas can be used as open decks, or can be shaded with optional inflatable Bana Tents fitted with a battery powered light, speaker and fan.





## 48" Dining Bana

Have lunch, enjoy your favorite beverages and watch the action all day from the comfort of this Bana. Add a Bana Tent and some music for a great time. 5-6 of your friends or family can relax on the water together.

### Features:

- 48" round drop stitch table top.
- 330 degree seating well around the table.
- Quick Step to get on the inflatable.
- Recessed space for Yeti Tundra 45 cooler.
- Ballast bags for stability.
- Netted footwell.
- Anchor mounting ring underside.
- Table will not tip over!
- Can accommodate any of the Bana Tents
- Connectable to create Bana Cities!





### Floating Oasis Bana

The Floating Oasis is the perfect getaway for couples at their favorite resort. These great waterfront rental AquaBanas can float in as little as 3 feet of water and provide a great experience with the lights and sound.

Each Floating Oasis includes choice of (1) Bana Tent, (1) raised double lounger, and (3) netted sidewalls.

Add the optional JBL speaker, Yeti cooler and Bolleke Light to party well into the evening on the Floating Oasis.

#### Features:

- Can accommodate 2-4 people at a time.
- Ballast bags for stability
- Anchor mounting ring underside.
- Can accommodate any of the Bana Tents
- Fits 1 Double Lounger.
- Connectable to create Bana Cities!





### Swim Up Bar Bana

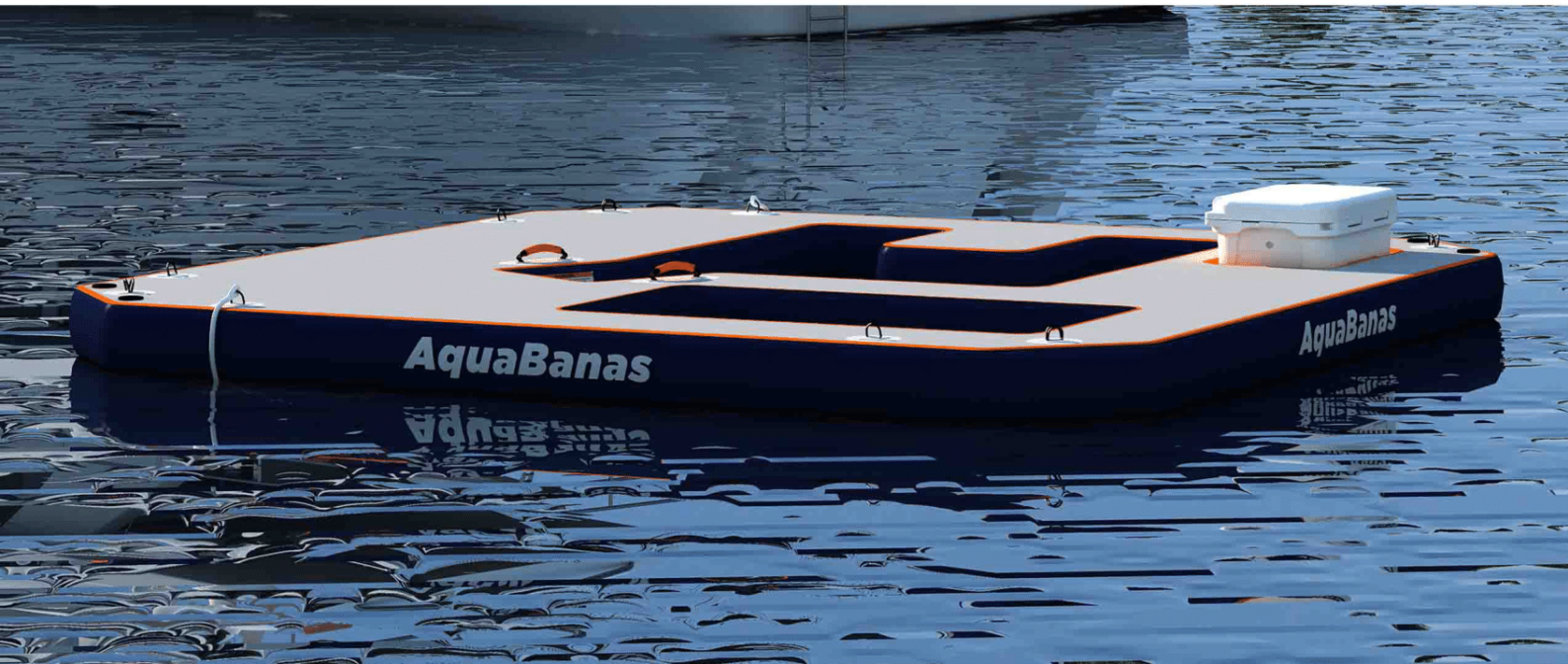
The Swim Up Bar Bana is a blast! It's a great way to hang in the water and enjoy some cool beverages, or feel free to climb on board and relax in the sun. There's plenty of room.

The Swim Up Bar Bana is also a great launch platform for SeaBOBs, Kayaks and SUP's.

#### Features:

- Can accommodate up to 8 people.
- Layout space for 3 -4 sun bathers.
- Recessed space for Yeti Tundra 45 cooler.
- Ballast bags for stability.
- Anchor mounting ring underside.
- Can accommodate any of the Bana Tents.
- Connectable to create Bana Cities!





## Lounge Bana

Relax in style with the Lounge Bana. This Bana features 2 seats as well as 2 layout areas and one splash mat on the water. The splash mat is a great way to cool off on the deck without getting in the water, or it's a great place for the smaller kids to hang out and play with the adults.

### Features:

- Can accommodate up to 4-5 people.
- Quick Step to get on the inflatable.
- Netted seats for 2.
- Layout space for 2 sun bather.
- Splash Mat for 1-2 small children.
- Recessed space for Yeti Tundra 45 cooler.
- Ballast bags for stability.
- Anchor mounting ring underside.
- Can accommodate any of the Bana Tents.
- Connectable to create Bana Cities!





### Command Bana

Relax in style with the Command Bana.

This Bana features 2 seats oriented in a 45 degree angle to give a commanding view of all who enter and exit. The quick step access allows sunbathers easy access to the deck.

#### Features:

- Can accommodate up to 4-5 people.
- Quick Step to get on the inflatable.
- Netted seats for 2.
- Layout space for 2-3 sun bathers.
- Recessed space for Yeti Tundra 45 cooler.
- Ballast bags for stability.
- Anchor mounting ring underside.
- Can accommodate any of the Bana Tents.
- Connectable to create Bana Cities!





## Splash Pad 340 Bana

The Splash Pad 340 Bana is made for parents with small kids. The design allows the parents to sit close by as the little tykes splash on the mat and have fun. The parents can sit on the bench while the kids safely play a few inches down in the water.

### Features:

- Can accommodate up to 5-6 people.
- Quick Step to get on the inflatable.
- Splash Mat for 2-3 small children.
- Ballast bags for stability.
- Anchor mounting ring underside.
- Can accommodate any of the Bana Tents.
- Connectable to create Bana Cities!





## Splash Pad 680 Bana

The Splash Pad 680 Bana is our largest Bana. It features a mat that sits directly on the water and is made for kids and adults to play and splash around on. The parents can sit nearby and watch as the kids safely play on the water. The center of the mat will drop about 12" when under load.

### Features:

- Can accommodate up to 7-9 people.
- 2x Quick Step to get on the inflatable.
- Splash Mat for 5-6 small children.
- Recessed space for Yeti Tundra 45 cooler.
- Ballast bags for stability.
- Anchor mounting ring underside.
- Can accommodate any of the Bana Tents.
- Connectable to create Bana Cities!





## Doggie Bana

The AquaBanas Doggie Bana is a perfect way for dogs to play and enjoy time on the water with, or without, their owners. Super reinforced construction and a non slip surface make this a truly unique item for man's best friend!

### Features:

Can accommodate multiple dogs at a time.

Modified Quick Step for dogs.

Splash Pool.

Leap Of Faith.

Shade Tent.

Non Slip Top Surface.

Ballast bags for stability

Anchor mounting ring underside.

Connectable to create Bana Cities!







## Work Out Bana

The Work Out Bana is a large open space on the water that allows people to exercise or practice yoga. This is also a great deck to use in Bana Cities when transition space may be needed.

### Features:

- Can accommodate 6-8 people.
- Quick Step to get on the inflatable.
- Layout space for 4 sun bathers.
- Recessed space for Yeti Tundra 45 cooler.
- Ballast bags for stability.
- Anchor mounting ring underside.
- Can accommodate any of the Bana Tents.
- Connectable to create Bana Cities!





## PWC Bana

The PWC Bana serves as a parking spot to put the PWC's when not being used. Many Bana Cities may be anchored just far enough off shore that a PWC is the most convenient way to shuttle people back and forth. Now there's a place to park the PWC and keep it out of the sun.

### Features:

- Can accommodate 2 PWC's.
- Can accommodate 1 person at a time.
- Ballast bags for stability.
- Anchor mounting ring underside.
- Can accommodate any of the Bana Tents.
- Connectable to create Bana Cities!





## Play Pit Bana

Need a high quality play pen on the water or the beach?

When used as part of a Bana Cities configuration, it's a safe place to keep the little ones contained with toys and other items, or to take naps. Add a Bana Tent, JBL Speaker and the battery powered fan, and you will create an ultimate comfort zone.

The Play Pit can also be used on the beach directly on the sand. We suggest an optional Bana Tent for use in all applications.

Features:

2 Part Inflatable.

Easy set up and breakdown.

Can accommodate up to 3 - 4 small children.

Ballast bags for stability.

Anchor mounting ring underside.

Can accommodate any of the Bana Tents.

Connectable to create Bana Cities!





### Swing Bana

Imagine a romantic evening of lightly swinging on the ocean with your favorite partner. A beautiful view, a gentle breeze, some soft music playing on the JBL speaker, and your favorite beverage will set the mood for lifetime memories!

#### Features:

- 2 Part Inflatable.
- Can accommodate up to 2 people.
- Ballast bags for stability.
- Anchor mounting ring underside.
- Connectable to create Bana Cities!





## Spa Bana

No Bana City is complete without the Spa Bana.

This Bana features our custom made AquaBananas Massage Table and (1) BT36 Bana Table to hold your basket of oils and lotions.

Just add a Bana Tent, soft music, a gentle rocking motion of the water, a nice sea breeze and the touch of a great masseuse and the Spa Bana will take you to a whole new level.

Add side walls for additional privacy.

Features:

Can accommodate 2 people.

Ballast bags for stability.

Anchor mounting ring underside.

Can accommodate any of the Bana Tents

Connectable to create Bana Cities!





## AquaBanas PWC Dock for Yachts

AquaBanas manufactures high quality PWC Docks for yachts in all shapes and sizes to help organize the toys on the water. Ask about our custom designs to match your exact needs.

All AquaBanas PWC Docks are engineered to quickly connect to any AquaBanas deck and get you on the water faster.

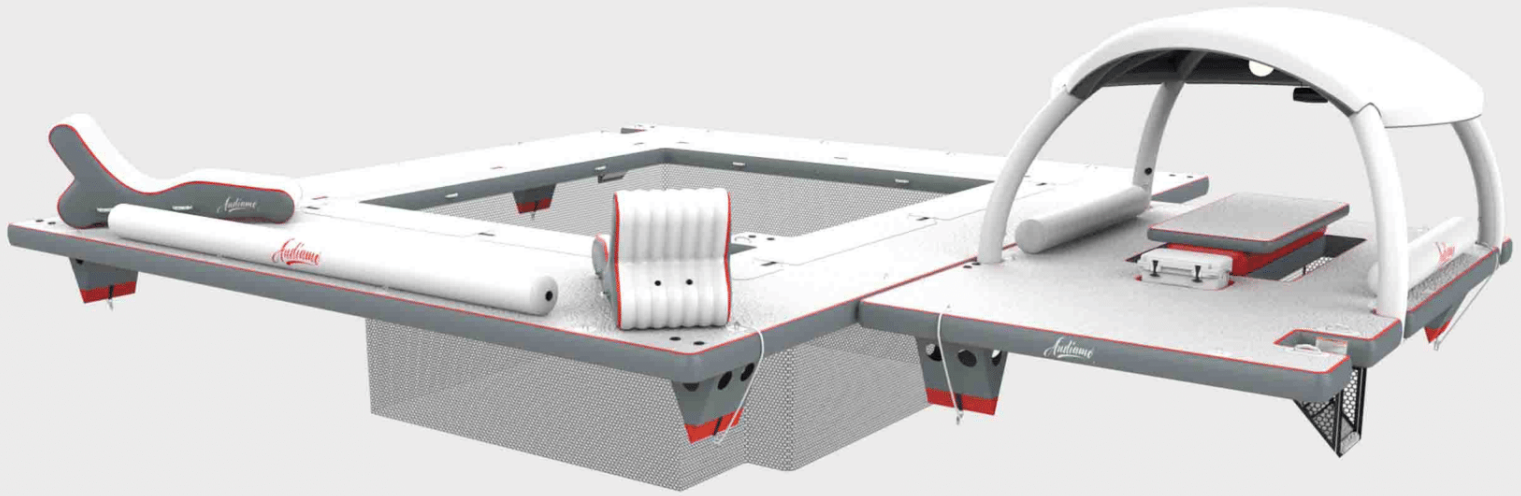
Fully customize both your PWC Dock and other AquaBanas to match your yacht livery.

## Features:

- Custom Designed
- Custom Size
- Custom Colors
- Add logo
- Non-Slip Top Floors
- Engineered Systems
- Quick Step Entry



Add an AquaBanas  
to any current PWC dock  
or pool dock.



## AquaBanas Sea Pool

AquaBanas manufactures high quality Sea Pools that have innovative solutions for yacht crews. All AquaBanas Sea Pools are engineered to quickly connect to any AquaBanas deck and get you on the water faster. Our POP Out Pool design allows the netting to be left behind in clean water, or a Splash Mat to be added if lots of small children are on board.

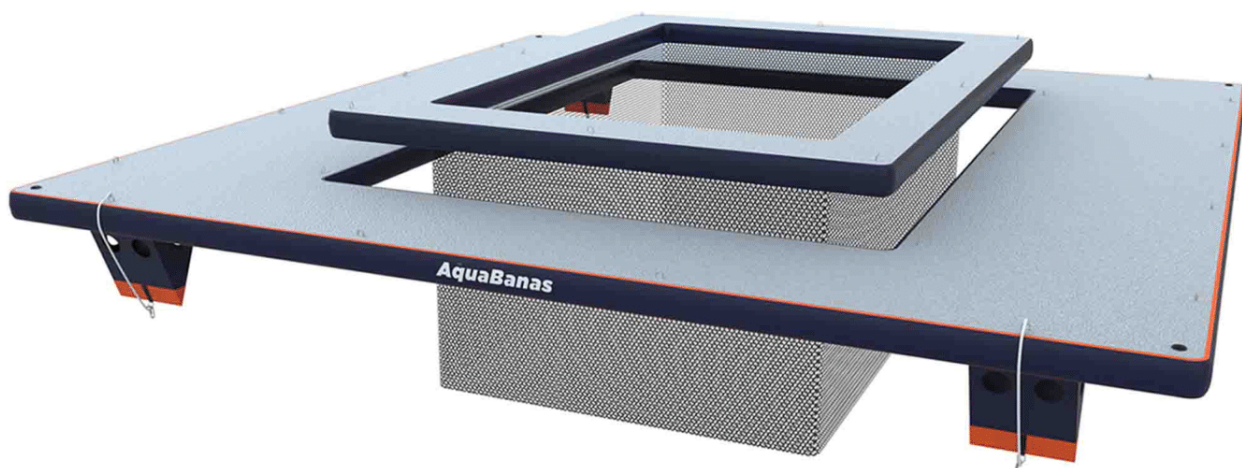
Fully customize both your Sea Pool and other AquaBanas to match your yacht livery.

## Pop Out Pool Design

The new AquaBanas Pop Out Pool design makes pool deployment and retraction much easier for yacht crews.

## Features:

- Custom Designed
- Custom Size
- Custom Colors
- Add logo
- Non-Slip Top Floors
- Engineered Systems
- Quick Step Entry
- Pop Out Pool



### Designed for land or water!

All AquaBana are very strong and durable. Go ahead and use them on the beach. Each tent leg has been reinforced for land use to prevent any type of abrasion damage. The Patented SandD Sand Anchor will hold it tight to the ground.

### Understanding the Tent Height:

All model numbers are shown in metric, and are converted below to imperial for convenience.

120cm = 48"

180cm = 71"

The number shown (120 or 180) is the clear height from the bottom of the cross bar or arch on the tent to the top of the AquaBananas deck.

If the tent is used on land, without an AquaBananas deck, this height will increase by 20cm/8".

### Tent styles are as follows -

#### BT120

Bana Tent 120 - 4 sides are all 120cm/48" above the deck.

#### BT180-WT

Means the tent has (2) 120cm sides and (2) 180cm raised arches directly through the front and back of the unit to allow an easy walk through.

#### BT180-1 (2, 3, 4)

The last number at the end of the BT180-X model number indicates how many arches are raised on the tent. This is important because it allows for different intersection solutions when building Bana Cities.



*Bana Tent BT120*



*Bana Tent BT180-WT*



*Bana Tent BT180-1 with Land Nets*





**Universal Bana Tent design quickly connects to any AquaBananas deck.**

**9 Reasons AquaBananas Tents are great to have:**

- 1 - Super strong design provides shade from sun.
- 2 - Mount for the JBL speaker.
- 3 - Center mount for the rechargeable Bolleke light.
- 4 - Mount for the rechargeable variable speed fan.
- 5- Provides protection from the elements.
- 6 - (6) tent styles available to fit any Banas Cities intersections.
- 7 - Tents have optional side walls for added shade and shelter.
- 8 - Dual purpose design can be used on either land or water.
- 9 - Optional Land sidewalls are available for beach applications.



**Ultra Strong Bana Tent design is built for land or sea!**

## The 180 Tents

With the ability to create Bana Cities, the need arose to have tent designs that would accommodate various intersections as they came together by having raised arches to walk through. The Bana 180 tent fits this need. Each tent measures 180cm/71" under the raised arch, and allows easy access to walk between banas.

Bana Tents are designed to provide shade and limited protection from the elements.



*Bana Tent BT180-1*



*Bana Tent BT180-2*



*Bana Tent BT180-3*



*Bana Tent BT180-4*

All AquaBanas are  
universally connectable  
to create unlimited designs!





*Bana Tents  
are built for  
use on land or sea!*

## Create Bana Tent Cities on the beach!

Bana Tents are not just built for use on water, they are also built for use on the beach!

Quickly create large shaded areas on the beach for your loungers and tables with our Bana Tents. Add side walls for additional shade or privacy. With 6 different models of tents, you are sure to be able to create a configuration that will fill your needs.

Contact an AquaBananas expert for details.



Double and Single Loungers

36" Table



*Table Sold Separately*

## Single Raised Lounger

The Single Raised Lounger is a commercial grade inflatable lounge chaise with a raised knee area.

The inflated pressure can be adjusted to find the right comfort spot.

All loungers have an anchor strap on the bottom to keep them from getting blown away on windy days.

Add a Bana Tent to have lights, sound and a fan.

Great for water fronts, yachts and resorts.



*Customize your Single Raised Lounger with the addition of our 36" table, a Bana Tent and a JBL Speaker for an unforgettable experience.*



Table Sold Separately

## Double Raised Lounger

The Double Raised Lounger is a commercial grade inflatable chaise lounge with a raised knee area.

The inflated pressure can be adjusted to find the right comfort spot.

All loungers have an anchor strap on the bottom to keep them from getting blown away on windy days.

Add a Bana Tent to have lights, sound and a fan.

Great for water fronts, yachts and resorts.



*Shown with the AB1824 table. Customize your Double Raised Lounger with the addition of a Bana Tent and a JBL Speaker for an unforgettable experience.*



## Massage Table

The AquaBanas Massage Table is a high quality inflatable table that will support well over 500 pounds with total firmness and comfort.

The air pressure in the bed top can be quickly adjusted to suit the desire of the customer.

Anchor rings on each side allow it to be secured down to a bana deck during water use.

For land or water use.



*Customize your Massage Table with the addition of our 36" tables, a BT180-1 Tent with land sidewalls, a Bolleke Light and a JBL Speaker for a more soothing experience.*



AquaBanas currently offers a range of tables to use with their product range. If you are on the beach with the loungers, or getting a massage in the Spa Bana, these tables serve a needed function of having a place to set drinks or lotions.

All tables have an anchor strap on the bottom and are made from incredibly strong drop stitch material that measure 30cm (12") tall.

Tables can be customized to fit your specific theme as needed.



**AB24T**



**AB1824T**



**AB36T**



## Bravo 2000 Pump

2 motor, dual stage power:  
Motor 1 up to 1200 l/min, 2.0psi, 1000 watts  
Motor 2 (Booster) increases to 2000 l/min, 5.0psi, 2000 watts power  
Thermal Overload Protection  
Dims - 32cm x 17cm x 26cm, 4.1 kg/ 9 lbs

Includes: Adaptors, 2m EPDM inflation hose (25mm), 2m power wire. Stocked in 120 volt and 230 volt.

## GET THE RIGHT PUMP!



## Bravo OV-10

Output 1700 l/min, 3.6psi, 1000 watts  
Thermal Overload Protection  
Dims - 15cm x 16cm x 17cm, 1.7 kg/ 4 lbs

Includes: Adaptors, 2m EPDM inflation hose (25mm), 2m power wire, Built In sand filter.

Stocked in 120 volt and 230 volt.



## Bravo BTP-12A 12V iSUP Pump

Dual Stage Output inflates quickly  
Connects to 12v Battery with Cigarette Lighter  
Inflate to 15psi  
Dims - 20cm x 10cm x 13cm, 2.5 kg/ 6 lbs

Includes: Adaptors, 1.7m inflation hose (25mm).





## Extended Inflation Hoses

Custom length inflation hoses are convenient and safe, as well as huge time savers! Reach your inflatables from small boats, yacht garages, and shorelines to work more efficiently and safer!



The Bravo Y-Connector makes inflation much faster while also letting the pump run cooler!



Inflations Hoses up to 25m (82') available.



Order some spare  
inflation hose adaptors

Ask us about availability  
of quality hand pumps!

***AquaBanas***<sup>®</sup>

***DRAKE Marine***  
*International Ltd* 